



+

WE  
KNOW  
ENDO.

January to June 2021

Sales Promotion

Dentsply Sirona Malaysia Sdn Bhd

THE DENTAL  
SOLUTIONS  
COMPANY™



Dentsply  
Sirona

# Clearance

## AH Plus



**RM225**  
EXP: Oct 2021

## Waveone Gold Assorted 4's 31mm



**RM200**  
EXP: Mar 2021

## Guttacore Obturator 080B, 090B



**RM30**  
EXP: Apr 2021

## Guttacore Pink 020P & 025P



**RM50**  
EXP: Aug 2022

## K Flexofile Readysteel, 18mm, 025



**RM20**  
EXP: June 2021

## K Flexofile Readysteel 31mm, 040



**RM30**  
EXP: Sept 2021

## Finger Spreader Point, 25mm 010



**RM30**  
EXP: Dec 2021

## Calamus GP Cartridge, 23G 10pc



**RM100**  
EXP: Mar 2021

## Complete Enhance Pogo Kit



**RM200**  
EXP: Nov 2021

## Pogo Refill Kit, Disc, Cups and Points 30's



**RM200**  
EXP: Oct 2021

### Terms and Condition:

1. Transaction and price applies only for WEST MALAYSIA private clinics, billed through **MEDEXP Sdn Bhd**, and order submission through our internal consumable sales team only. **Not applicable through dealers**
2. No exchange, no return policy upon confirmed order
3. Highlights promotion are subject to stock availability and Dentsply Sirona Malaysia has the right to end this promotion without prior notice

**Contact Person:**  
Tan Len Seng 012 376 9209  
Wihdah Zulkepli 013 704 2436

# Clearance

## Spectrum Bond



**RM20**  
EXP: June 2021

## Aquasil XLV



**RM100**  
EXP: Jul 2021

## CeramX Duo, Compule D1, D2



**RM30**  
EXP: June 2021

## CeramX Duo, Syringe D3, DB,



**RM10**  
EXP: Feb - Apr 2021

## Dyract XP A3.5



**RM30**  
EXP: June 2021

## Esthet-X HD Compule A3.5



**RM30**  
EXP: Jan, Apr & Dec 2021

## Fix Adhesive Aerosol



**RM30**  
EXP: Feb & Aug 2021

## Integrity A3.5



**RM150**  
EXP: June 2021

## Enhance Refills Cups and Points 30's



**RM200**  
EXP: Feb & Oct 2021

### Terms and Condition:

1. Transaction and price applies only for WEST MALAYSIA private clinics, billed through MEDEXP Sdn Bhd, and order submission through our internal consumable sales team only. **Not applicable through dealers**
2. No exchange, no return policy upon confirmed order
3. Highlights promotion are subject to stock availability and Dentsply Sirona Malaysia has the right to end this promotion without prior notice

**Contact Person:**  
Tan Len Seng 012 376 9209  
Wihdah Zulkepli 013 704 2436



## Who are we addressing?

ProTaper@Universal customers...

... who want to continue to use their tried-and-tested preparation technology.  
 ... who want files which are extremely flexible and durable.

# As one era ends, another begins.

### Protaper Hand Use Package



**RM935**

NP:RM1,110

Package:  
 4 x Protaper Hand Use Pack of 6 (any size & length)  
 1 x Glyde Pack of 3 (3ml each)

### M Access Hand Files Package



**RM285**

NP:RM375

Package:  
 15 x M-Access Hand Files Pack of 6  
 (any type, size or length)

### Radix Translucent Fibre Post Kit



**RM1300**

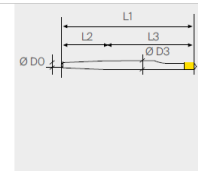
NP:RM1,580

Package:  
 1 x Translucent Fibre Post Kit Pack of 24  
 2 x Precision Drills and 1 x Peeso Reamer

0.8 Kit: Size 1 (Yellow) and 2 (Red)  
 1.0 Kit: Size 3 (Blue) and 4 (Green)  
 1.3 Kit: Size 5 (Black) and 6 (White)

### Radix Translucent Fibre Post Refills

	x10					
(mm)	1	2	3	4	5	6
ØD0	0.8	0.8	1.0	1.0	1.3	1.3
ØD3	1.35	1.47	1.67	1.83	2.04	2.22
L1	20.0	20.0	20.0	20.0	20.0	20.0
L2	6.00	7.25	7.20	9.00	8.00	10.00
L3	13.77	12.52	12.51	10.71	11.63	9.63



**RM535**

NP:RM660

Package:  
 1 x Translucent Fibre Post Refills Pack of 10

### Pro Root MTA Refills



**RM745**

NP:RM990

Package:  
 1 x MTA Refills Pack of 4 (0.5g each)

### NEW: AH Plus Jet Starter Kit



**RM315**

NP:RM420

Package:  
 1 x AH Plus Jet Automix (15g)  
 20 Mixing Tips





## Who are we addressing?

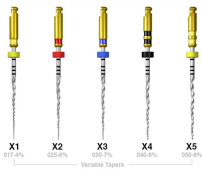
ProTaper@Universal customers...

... who want to continue to use their tried-and-tested preparation technology.  
 ... who want files which are extremely flexible and durable.

# As one era ends, another begins.

### Protaper NEXT Package

**PROTAPER • NEXT™**



**RM985**

NP:RM1,175

Package:  
 3 x Protaper NEXT File Pack of 3 (any size & length)  
 1 x Proglider Pack of 3 (any length)  
 1 x Glyde Pack of 3 (3ml each)

### Protaper GOLD Package

**Protaper Gold®**



**RM1030**

NP:RM1295

Package:  
 3 x Protaper GOLD File Pack of 6 (any size & length)  
 1 x Proglider Pack of 3 (any length)  
 1 x Glyde Pack of 3 (3ml each)

### Waveone Gold Assorted Package



**RM1360**

NP:RM1,640

Package:  
 3 x Waveone GOLD Assorted Pack of 4 (any length)  
 1 x Waveone Gold Glider Pack of 3 (any length)  
 1 x Glyde Pack of 3 (3ml each)

### Waveone Gold Pack of 6's Package



**RM1750**

NP:RM2150

Package:  
 3 x Waveone GOLD Refills Pack of 6 (any length)  
 1 x Waveone Gold Glider Pack of 3 (any length)  
 1 x Glyde Pack of 3 (3ml each)

### Trunatomy Package



**RM1710**

NP:RM2,420

Package:  
 3 x Trunatomy Assorted Pack of 5 (any length)  
 1 x Trunatomy Paper Points Assorted Pack of 180  
 1 x Trunatomy Gutta Percha Assorted Pack of 60  
 1 x Trunatomy Irrigation Needle Box of 40 (30g)

### Pro Rinse Side Port Needles



**RM325**

NP:RM380

Package:  
 1 x Pro Rinse Side Port Needles Box of 40 (30g)



Dentsply Sirona Endodontics

Surf the canal with confidence

**X-Smart Plus Package**



**RM6999**  
NP:RM11,100

- Package:
- 1 Unit X-Smart Plus Endo Motor
  - 10 x Protaper NEXT Assorted Pack of 3 (25mm)
  - 1 x Pack of 3 Glide Path
  - 1 x Glyde Pack of 3 (3ml each)

**Endo Activator Kit**



**RM2150**  
NP:RM3285

- Package:
- 1 Unit Handpiece Driver
  - 1 x Yellow Small Tips Box of 25 (15/02)
  - 1 x Red Medium Tips Box of 25 (25/04)
  - 1 x Blue Large Tips Box of 25 (35/04)

**Thermaprep 2 Oven Package**



**RM2350**  
NP:RM3320

- Package:
- 1 Unit Thermaprep 2 Oven
  - 3 x Guttacore Pack of 6 (any sizes)

**Start-X Trial Kit (Satelec or EMS)**



**RM1990**  
NP:RM2940

- Package:
- 1 x Access Cavity Wall Refine Tips
  - 1 x MB2 Canal Scouter Tips
  - 1 x Canal Opening Scouter Tips
  - 1 x Metal Post Remover Tips
  - 1 x Reveal Pulp Chamber Floor Anatomy Tips
  - 1 x Wrench For Start -X Tips
  - 1 x DVD Instruction For Use`

**+**  
**WE  
KNOW  
ENDO.**

**MAILLEFER**

TruNatomy™

True, Natural, Anatomy

**Available NOW!!**

- More space for debridement & debris extraction
- Respect of the natural tooth anatomy
- Preservation of tooth integrity while allowing for appropriate irrigation, disinfection and obturation

**For a truly smooth, controlled and efficient experience.**



TruNatomy™ Orifice Modifier



TruNatomy™ Glider



TruNatomy™ Prime Endodontic File



TruNatomy™ Prime Absorbent Points



TruNatomy™ Conform Fit Gutta-Percha Points



TruNatomy™ Irrigation Needle

[dentsplysirona.com/trunatomy](https://dentsplysirona.com/trunatomy)

 #trunatomy







### Palodent V3 Intro Kit



**RM 1850**

*Np: RM2380*

Package:  
 1 x Universal Ring  
 1 x Narrow Ring  
 100 x Palodent Matrices (25 each sizes)  
 75 x Wedges (25 each size)  
 30 x Wedgeguards (10 each size)  
 1 x Forceps & 1 x Pin Tweezer

### Smartlite Focus Intro Kit



**RM 2500**

*Np: RM3200*

Package:  
 1 Unit of Smartlite Focus  
 1 Unit of Charging Base  
 1 Unit of Power Connector  
 5 x Eye Protector Shields  
 300 x Sleeves Barrier

### SDR Universal 10 Syringes



**RM 605**

*Np: RM780*

Package:  
 1 x 10 SDR Universal Syringes (1g each)

### NEW: SDR+ Universal 2 Syringes



**RM 130**

*Np: RM165*

Package:  
 1 x 2 SDR+ Universal Syringes (1g each)

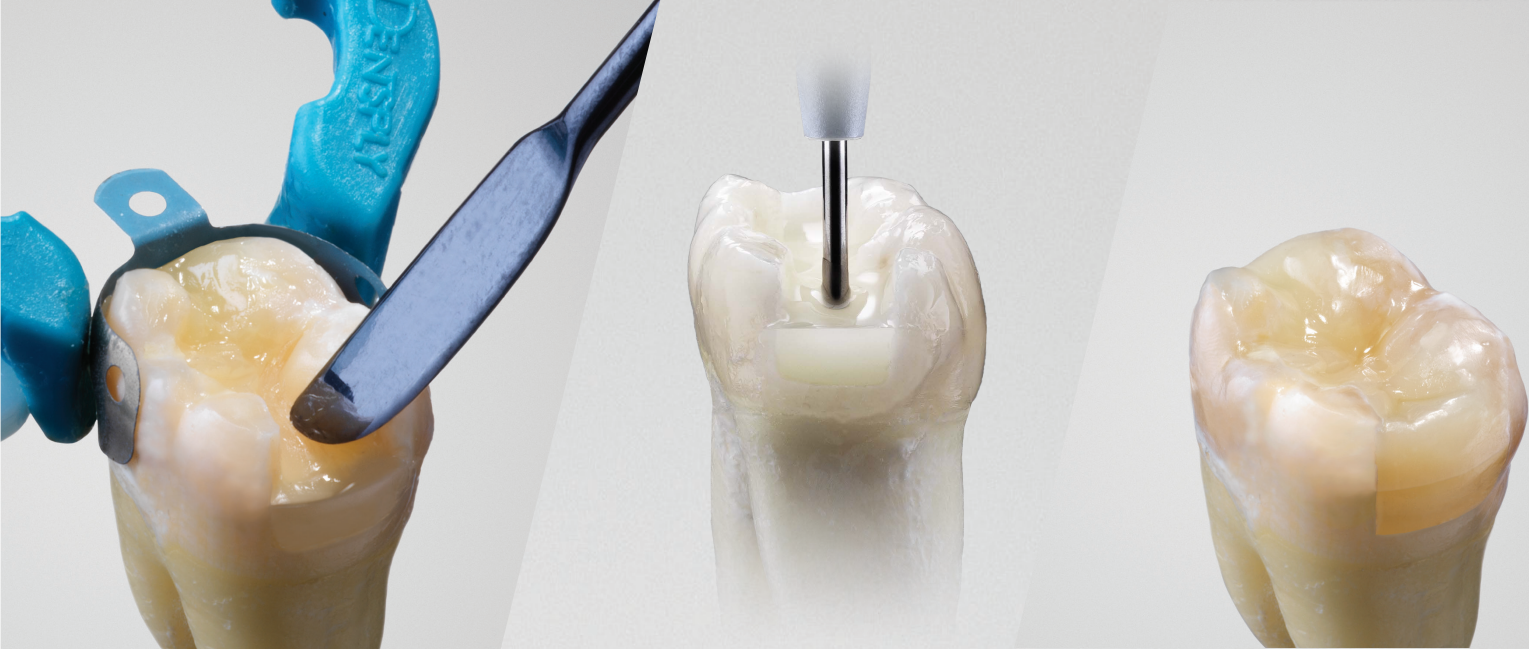
### NEW: SDR+ with Shades 15 Compules



**RM 520**

*Np: RM690*

Package:  
 2 x SDR+ 15 Compules (0.25g each)  
 Choice of Shades: A1, A2, A3



### Ceram-X Universal Package



**RM585**  
Np: RM785



VITA®1  
CLOUD shade

### Ceram -X Duo Package



**RM585**  
Np: RM785

Shade guide

VITA®1 Shade	A1	A2	A3	A3.5	A4	B1	B2	B3	B4	C1	C2	C3	C4	D2	D3	D4
Dentin Shade	D1	D2	D3	D3	D4	D1	D2	D3	D3	D2	D3	D3	D4	D2	D3	D3
Enamel Shade	E2	E2	E2	E3	E3	E1	E1	E3	E3	E1	E2	E2	E2	E2	E2	E1

Package:  
3 x Ceram-X Universal Syringes (3g each)  
1 x Prime and Bond Universal (4ml)

Package:  
3 x Ceram-X Duo Syringe (3g each)  
1 x Prime and Bond Universal (4ml)

### Prime and Bond Universal



**RM720**  
Np: RM870

Package:  
3 x Prime and Bond Universal (4ml each)

### Self Cure Activator



**RM90**  
Np: RM140

Package:  
1 x Self Cure Activator (4.5ml)

### Esthet-X Flow



**RM180**  
Np: RM210

Package:  
2 x Esthet-X Flow 2 Syringes (1.3g each)

### Core Build Up Material Package



**RM650**  
Np: RM920

Package:  
1 x Core-X Flow 4 Syringes (4.75g each)  
1 x Self Cure Activator (4.5ml)  
1 x Prime and Bond Universal(4ml)





**Aquasil Ultra Putty Wash Package**



**RM625**  
Np: RM750

Package:  
1 x Aquasil Ultra Plus Putty Set (450ml each)  
1 x Aquasil Ultra Light Viscosity 4 Cartridges (50ml each)

**Aquasil Ultra Cartridges Package**



**RM705**  
Np: RM960

Package:  
3 x Aquasil Ultra 4 Cartridges (50ml each)  
Choice of Viscosity: Heavy Body, Monophase, Light Viscosity, Extra Light Viscosity

**Calibra Universal (Self Adhesive)**



**RM330**  
Np: RM400

Package:  
2 x Automix Syringe (4.5g each)  
20 mixing tips

**Calibra Ceram (Adhesive)**



**RM499**  
Np: RM780

Package:  
1 x Automix Syringe (4.5g)  
20 mixing tips  
1 x Prime and Bond Universal (4ml)

**Calibra Veneers**



**RM250**  
Np: RM270

Package:  
1 x Syringe Base Cements (2g)

**Integrity Temporary C&B Package**



**RM750**  
Np: RM1120

Package:  
2 x Integrity Temporary C&B Material (76g each)



Cavitron systems  
benefit both hygienists  
and patients.



### 25K Ultrasonic Scaler Bobcat Pro



**RM3385**

*Np: RM4230*

Package:  
1 Unit Bobcat Pro 25K Ultrasonic Scaler  
1 x 25K FSI Powerline 1000 Insert  
1 x 25K FSI Powerline 100 Insert

### 30K Ultrasonic Scaler Cavitron SPS



**RM5999**

*Np: RM6225*

Package:  
1 Unit SPS Select 30K Ultrasonic Scaler with Reservoir  
1 x 30K FSI Powerline 1000 Insert  
1 x 30K FSI Powerline 100 Insert

### 25K Powerline FSI 3, 10, 100 & 1000



**RM870**

*Np: RM975*

Package:  
3 x Cavitron 25K Powerline

Choice of Inserts:  
FSI 3, 10, 100 or 1000

### 30K Powerline 3, 100 & 1000



**RM870**

*Np: RM975*

Package:  
3 x Cavitron 30K Powerline Inserts

Choice of Inserts:  
FSI 3, 100 or 1000

### 25K P-10 Inserts



**RM500**

*Np: RM630*

Package:  
2 x 25K Cavitron P-10 Inserts



**Holder for X Ray Film / PSP Sensor**



**XCP Endo Kit**



**RM155**  
Np: RM200

Package:  
1 x Endo Arm & Ring, 3 x Endo Bite Blocks

**XCP ORA + Bite Block Kit**



**RM895**  
Np: RM1280

Package:  
1 Full Set XCP ORA Arms and Ring, Full Set of Anterior, Posterior and Bitewing Bite Blocks

**Endo Ray II Film Holder**



**RM315**  
Np: RM440

Package:  
4 x Endo Ray II

**Snap A Ray Xtra**



**RM220**  
Np: RM245

Package:  
3 x Snap-A-Ray Xtra Per Packager

**Flip a Ray Complete Kit**



**RM260**  
Np: RM370

Package:  
1 x Flip a Ray Adult, 1 x Flip a Ray Pedo and 2 x Flip a Ray Bitewing



**Holder for Digital Sensor (RVG)**



**XCP DS Fit Endo Kit**



**RM447**  
Np: RM605

Package:  
1 x Endo Arm & Ring, 2 x Endo Bite Blocks  
6 x Replacement Short Band

**XCP ORA DS Fit Hygiene Kit**



**RM1239**  
Np: RM1580

Package:  
1 x Arm and Ring, 2 x Bite Blocks Each Size  
(Anterior, Posterior & Bitewing)  
2 x Replacement Bands Short or Long Bands (6 each)

**XCP DS Fit Replacement Bands**

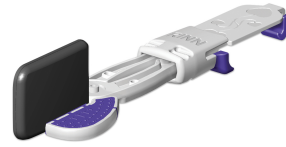


**RM204**  
Np: RM230

Package:  
2 x DS Fit Replacement Bands (6 each)

Choice of Bands:  
Short or Long

**Snap A Ray DS Endo 3's**



**RM575**  
Np: RM740

Package:  
3 x Snap-A-Ray DS Endo



treatment  
centres

Intego & Intego Pro

Performance you can rely on

[dentsplysirona.com/intego](https://dentsplysirona.com/intego)



**Contact Person:**

Sherly Wong: 016 660 2502 \*  
Chin Jian Ming: 017 472 7378

THE DENTAL  
SOLUTIONS  
COMPANY™

 **Dentsply  
Sirona**

Intego with compact water unit



**Cuspidor**  
Removable and swiveling, easy to clean, and easily accessible.

**Suction systems**  
Compatible with all conventional wet and dry suction systems, including amalgam separator.

**Purge function**  
Manual purging of all instrument waterlines on the dentist and assistant side.



**Fresh water bottle**  
For controlled water quality. Can also be filled with Dentosept S solution for permanent disinfection and manual sanitization.



**Smooth surfaces**  
The largely gap-free design of the surfaces ensures maximum infection control in the shortest time possible.

## Performance you can rely on

Intego is the best treatment center of its class. It is based on the innovative power and award-winning design of our existing treatment centers. As a reliable partner for an efficient practice, Intego has all the features that provide optimal support: ergonomic design for better workflows, high quality standards in processing and design, and a great value - this is why Intego is our performance class.



**Integrated disinfection system**  
Permanent disinfection of all water lines with Dentosept S. Automatic sanitization function for regular intensive disinfection. Can also be used as a self-contained water supply.



**Chemical suction hose cleaning**  
Cleaning agent container for chemical flushing of the suction lines. The concentration of cleaning agents can be individually adjusted.

## Safety you can rely on - with Intego Pro

Dentists all over the world share the highest demands for the safety of their patients and practice team. The Intego Pro infection prevention concept is designed so you can comply quickly and easily with all infection control regulations. The assistant element and water unit designs make infection prevention procedures even easier and less time consuming. All of this guarantees perfect infection control.

### Your choice of versions



Intego



Intego Pro



Intego Ambidextrous

**Starting Price: RM58,000**

**Contact Person:**

Sherly Wong: 016 660 2502  
Chin Jian Ming: 017 472 7378

Imaging



Extraoral imaging

The Orthophos family

[dentsplysirona.com/orthophos](https://dentsplysirona.com/orthophos)



## Orthophos E 2D imaging system

The solid 2D x-ray unit for cost-conscious practices. The entry-level device provides a smooth entrance into the world of digital imaging through reliable diagnostics, thanks to CsI sensor technology and straightforward use.

The cephalometric option also makes the Orthophos E a reliable partner for orthodontics. Enrich your practice with a wide range of services that are only possible through digital imaging.

*upgradeable to  
Cephalometric!*

**Starting price: RM79,000**

*Inclusive of 5 years warranty!*

**Contact Person:**

Sherly Wong: 016 660 2502  
Chin Jian Ming: 017 472 7378





# Orthophos S

## 2D/3D imaging system

The high-quality 2D/3D X-ray unit with a comprehensive range of services for every practice. Whether as a pure 2D device or including a 3D module - the Orthophos S is a reliable partner and optimized for daily practice tasks.

Thanks to the CsI Plus sensor with autofocus function, you are assured sharp images every time, even in anatomically difficult cases and the patented occlusal bite block positions patients automatically.

For use in orthodontics, the Orthophos S is also available with an optional ceph arm. And because future-proofing is a priority at Dentsply Sirona, ceph arm and 3D can be retrofitted at any time

*Upgradeable to  
Cephalometric and 3D!*



**Starting Price: RM99,000**

*Inclusive of 5 years warranty!*

**Contact Person:**

Sherly Wong: 016 660 2502  
Chin Jian Ming: 017 472 7378

# An excellent scan is just the beginning

CAD/CAM




 The integrated CEREC practice

 Chairside Implantology

 From practice to lab

 From practice to specialized partners implantology

 From practice to specialized partners orthodontics

## CEREC Primescan the best intraoral scanner for highest demands:

- Latest, future-oriented technology
- Easy handling even for frequent full arch scans
- Powder-free and photorealistic colour visualization
- Extremely fast
- Very precise and accurate
- Comprehensive hygiene concept
- Intuitive handling



## CEREC Primemill

- 7" Touch Interface
- Super Fast Mode for Zirconia crowns
- Block scanner and RFID reader for an easier and faster workflow
- Complete range for a huge variety of indications up to 70 mm block size
- Smoother Zirconia restoration



## CEREC Speed Fire

- CEREC SpeedFire is the smallest and fastest furnace available; it typically sinters a crown within 10-15 minutes.
- This means you can take advantage of the benefits of full-contour zirconium oxide during chairside treatments.
- If desired, a glaze can be applied with CEREC SpeedGlaze, which can be fired in just a few minutes in the CEREC SpeedFire. Afterwards, the restoration is ready to be seated.

## Contact Person:

Sherly Wong: 016 660 2502  
Chin Jian Ming: 017 472 7378

# Astra Tech Implant System BioManagement Complex™

A successful implant system cannot be determined by one single feature alone. Just as in nature, there are several interdependent features working together. The following combination of key features is unique to the Astra Tech Implant System:

**OsseoSpeed®** – more bone more rapidly

**MicroThread®** – biomechanical bone stimulation

**Conical Seal Design™** – a strong and stable fit

**Connective Contour™** – increased soft tissue contact zone and volume



## Astra Tech Starter Package includes:

- 1 Surgical Kit with prosthetic driver
- 10 Astra Tech OsseoSpeed EV Fixture
- 10 Cover Screw
- 10 HealDesign EV
- 10 Implant Transfer EV
- 10 Implant Replica EV
- 10 Ti Design/ Cast Design Abutment

**Starter package RM29,999**

*\*terms & conditions apply*



**Contact Person:**  
Kao Neng Keat : 016 678 3838



## Dentsply Sirona - The Dental Solutions Company

The largest global infrastructure in dentistry, committed to leading education and innovation with proven solutions to improve efficiency and advance patient care

### ✓ Education

Dentsply Sirona Academy educates over 350,000 professionals annually in almost 11,000 courses in over 80 countries

### ✓ Development

As the global technology and innovation leader, we spend over \$125 million every year to advance dentistry, and have the largest R&D platform with over 600 scientists and engineers.

### ✓ Studies

At any point in time we are engaged in more than 50 clinical studies, testing innovations to prove they are safe, effective and can be used with confidence



For Office Inquiry:

**Dentsply Sirona Malaysia Sdn Bhd** (1193266K)

G-06, The Grand@Kelana Damansara Suite,  
No.3, Jalan SS6/2, Kelana Jaya,  
47301 Petaling Jaya,  
Selangor, Malaysia  
03 7890 3788

### ✓ Support

over 4,000 people support customers every day

### ✓ Research

Dentsply Sirona Research creates the insight and knowledge needed to develop next-generation solutions, often collaborating with others who share the same goal.

### ✓ Innovative solutions

Every year these efforts enables us to launch over 30 innovative solutions that improve dental care.

#### Contact Person:

##### Equipment

Sherly Wong 012 660 2502

Chin Jian Ming 017 472 7478

##### Implant

Kao Neng Keat 016 678 3838

##### Consumable

Tan Len Seng 012 376 9209

Wihdah Zulkepli 013 704 2436

##### Sales Manager

Chew Hui Gee 012 321 5370

##### Training & Education

Haniff Syah 019 262 2066